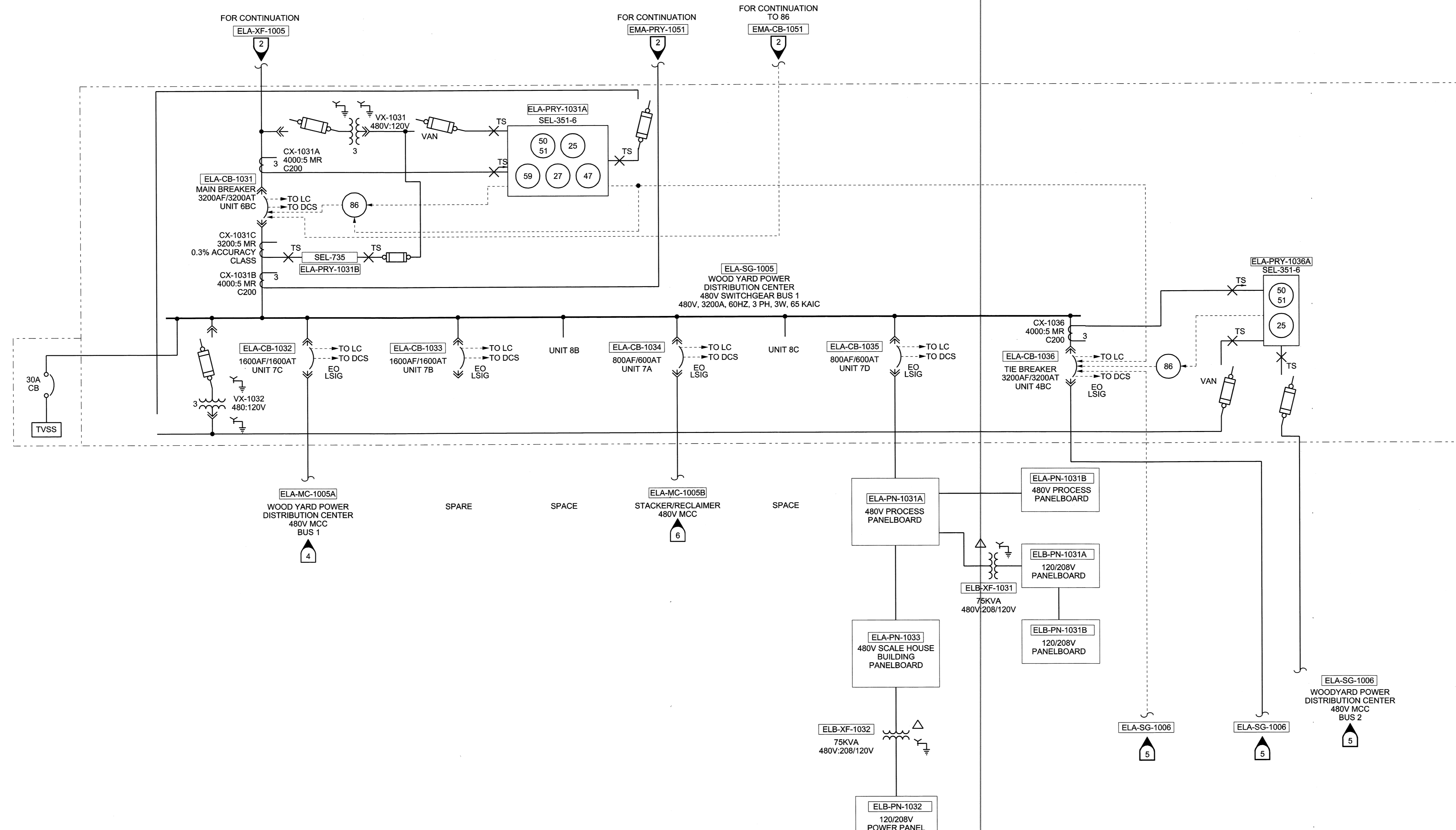


### LEGEND

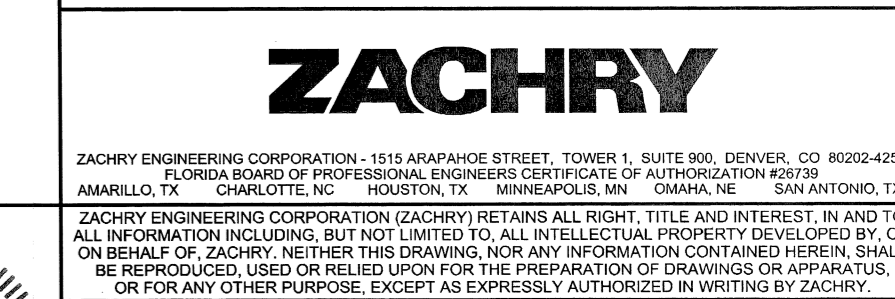
- LSIG LONG-TIME, SHORT-TIME, INSTANTANEOUS, GROUND FAULT INTERRUPTING (PROVIDED BUT NOT USED)
- TVSS TRANSIENT VOLTAGE SURGE SUPPRESSION
- VAN SINGLE PHASE VOLTAGE, PHASE A-TO-NEUTRAL
- EO ELECTRICALLY OPERATED
- RES RESISTANCE GROUNDING SYSTEM
- INSTRUMENT SIGNAL
- LC LOCAL CONTROL (REMOTE BREAKER CONTROL CABINET)



### REFERENCE DRAWINGS

- ANNOTATIONS, ABBREVIATIONS AND ASSOCIATIONS ELECTRICAL SYMBOLS LIST AND GENERAL NOTES D014200-AAAE71001 SH01-SH02
- MEDIUM VOLTAGE AC; 4160V SWITCHGEAR EMA-SG-1005 ONE-LINE DIAGRAM D014200-EMAE11005 SH01
- MEDIUM VOLTAGE AC; 4160V SWITCHGEAR EMA-SG-1006 ONE-LINE DIAGRAM D014200-EMAE11006 SH01
- LOW VOLTAGE AC POWER SYSTEM; 480V MCC ELA-MC-1005A ONE-LINE DIAGRAM D014200-ELAE11018 SH01-SH02
- LOW VOLTAGE AC POWER SYSTEM; 480V SWITCHGEAR ELA-SG-1006 ONE-LINE DIAGRAM D014200-ELAE11006 SH01
- ELA-MC-1005B ONE-LINE DIAGRAM M014200-FHSE00006 SH01-SH02 R3
- ELA-MC-1005/1006 P24 SWITCHGEAR ONE-LINE M014200-PDCE S01 RA1

| NO. | REVISION                | DATE     | DRWN | DSND | CHKD | CHRD |
|-----|-------------------------|----------|------|------|------|------|
| 1   | ISSUED FOR CONSTRUCTION | 10/11/12 | LMP  | LMP  | ADP  | EN   |
| 0   | ISSUED FOR BID          |          |      |      |      |      |



**GAINESVILLE RENEWABLE ENERGY CENTER**  
LOW VOLTAGE AC POWER SYSTEM  
480V SWITCHGEAR ELA-SG-1005  
ONE-LINE DIAGRAM

| DRAWN | DESIGNED | CHECKED   | IN CHARGE |
|-------|----------|-----------|-----------|
| LMP   | JSTWELL  | K.MEDRITH |           |

APPROVED BY: Michael A. Gentrup  
PROFESSIONAL ENGINEER  
STATE OF FLORIDA  
No. PE-72557

| NO. | REV. | DATE | BY | DESCRIPTION |
|-----|------|------|----|-------------|
|     |      |      |    |             |

D014200- ELAE11005 | 01 | 1

**EXTENSIVE CHANGES**  
REVIEW THOROUGHLY

